



Increment Weather Callout - Roof Repair

Laindon Library

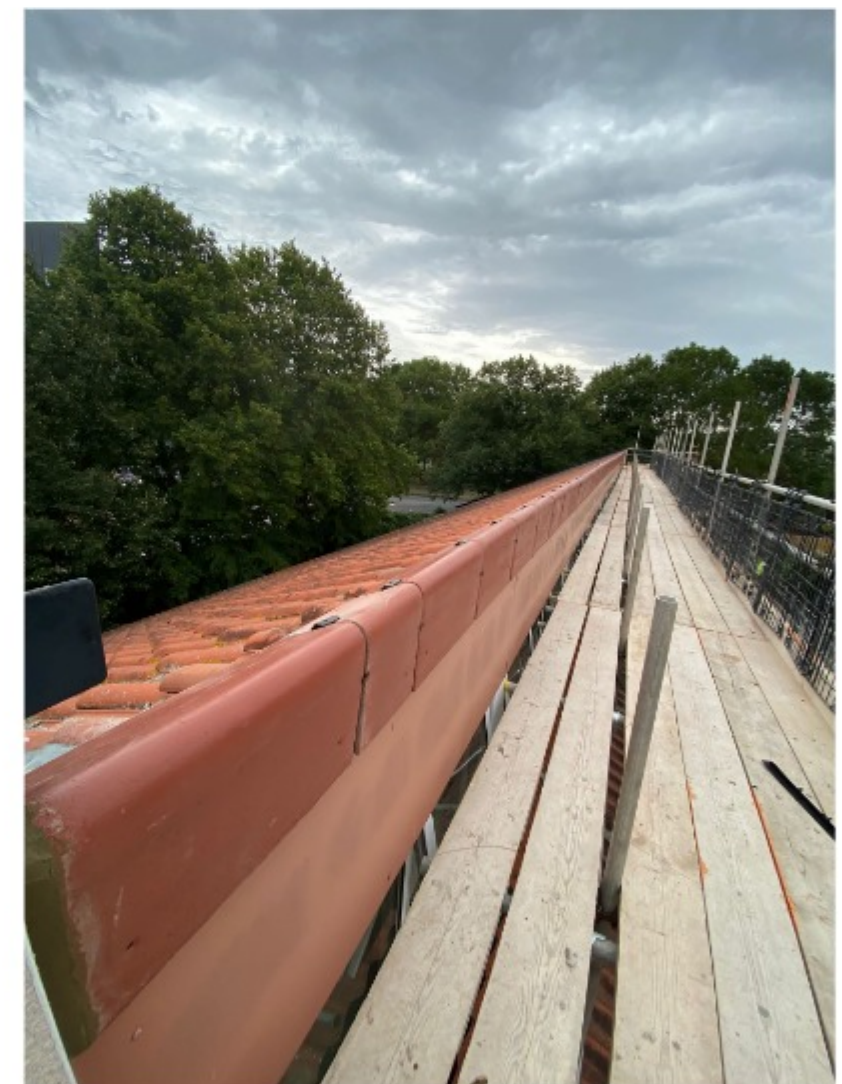
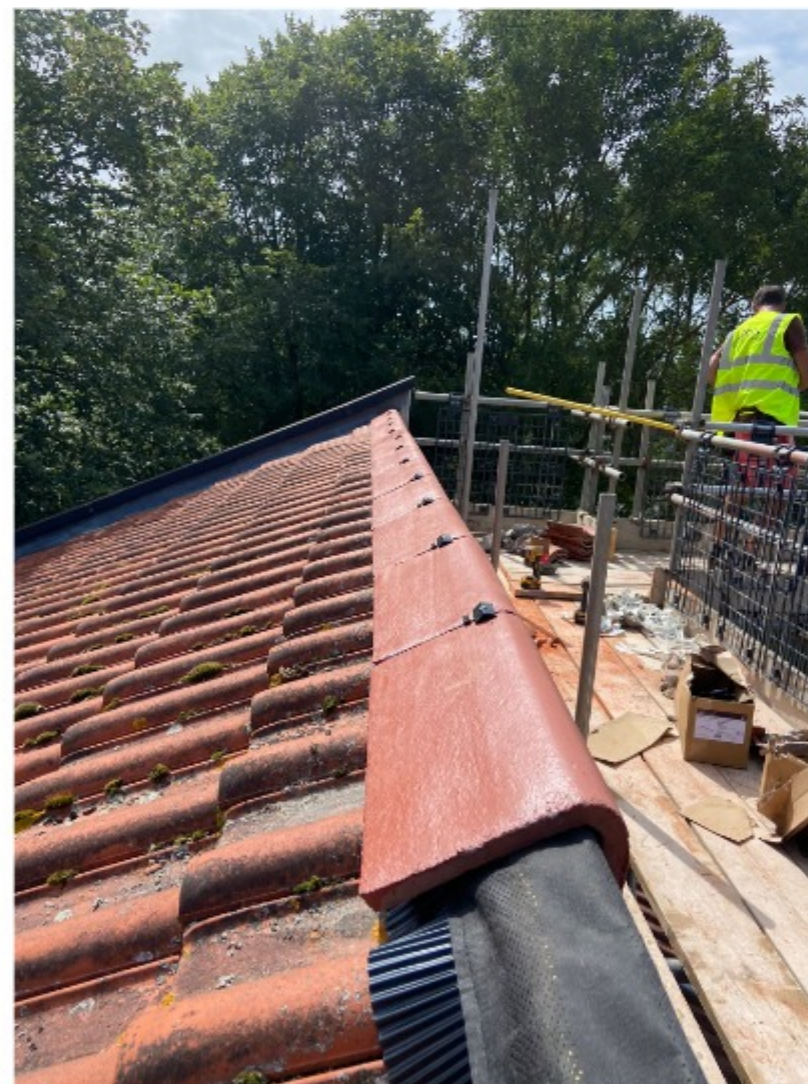
Essex County Council

Falling Tiles | Weather Damage | Roof Repairs

Responsive Maintenance: An emergency call-out was requested at Laindon Library after tiles fell from the roof due to severe weather conditions, posing a safety risk to staff and visitors. SDE operatives promptly attended the site, containing the area to eliminate the immediate danger of further falling tiles and ensuring public safety.

Implementing Solutions: Following an investigation into the condition of the existing roof tiles, SDE identified significant deterioration, necessitating a full replacement. Working closely with their supply chain, SDE quickly coordinated the erection of a scaffold platform to facilitate safe and efficient repairs. All works were carried out with careful planning to allow the library to remain fully operational, minimizing disruption to its services..

Handover and Long-Term Support: SDE successfully completed the replacement of the deteriorated tiles, ensuring the roof was restored to a safe and durable condition. The project was delivered with a focus on cost efficiency and long-term performance, providing the library with a robust solution to withstand future weather challenges. The seamless coordination and transparency with stakeholders ensured the safety and satisfaction of the client and the local community.



TALK TO US
ABOUT YOUR PROJECT

Call: 07711369256

Email: sde@sdecontracts.co.uk

